

km 0+435,000  
TS = 517,469 m

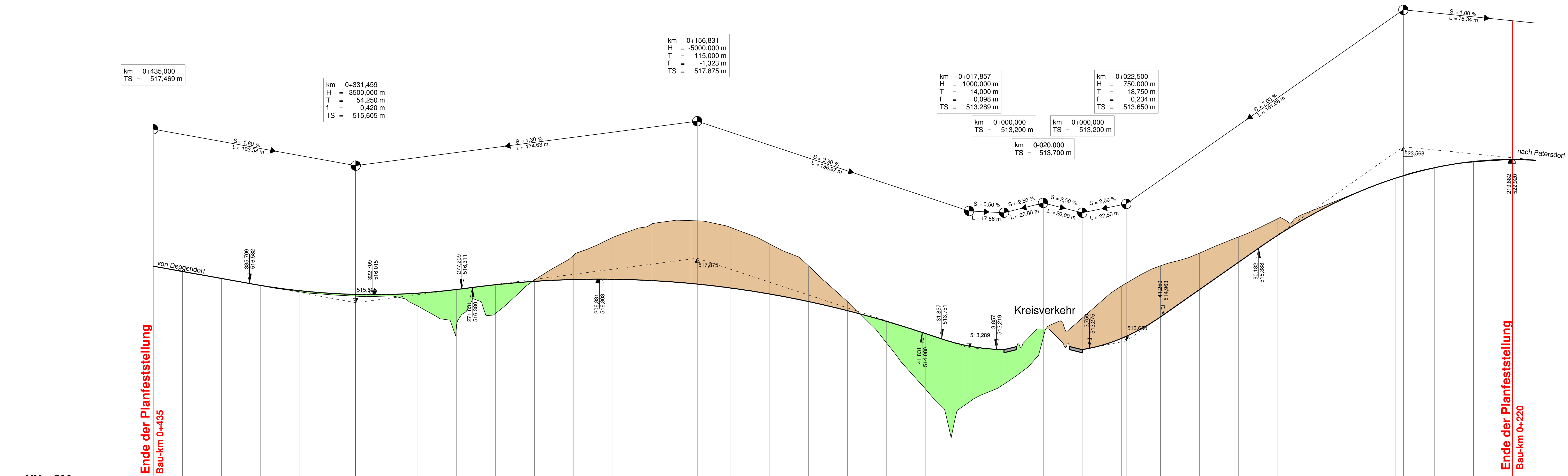
km 0+331,459  
H = 3500,000 m  
T = 54,250 m  
f = 0,420 m  
TS = 515,605 m

km 0+156,831  
H = -5000,000 m  
T = 115,000 m  
f = -1,323 m  
TS = 517,875 m

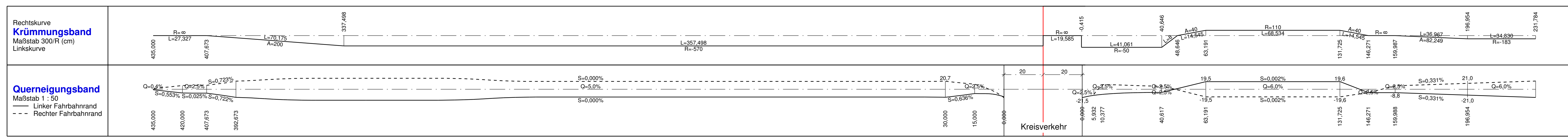
km 0+017,857  
H = 1000,000 m  
T = 14,000 m  
f = 0,098 m  
TS = 513,289 m

km 0+022,500  
H = 750,000 m  
T = 18,750 m  
f = 0,234 m  
TS = 513,650 m

km 0+164,182  
H = -1850,000 m  
T = 74,000 m  
f = -1,480 m  
TS = 523,568 m



Station	517,469	517,199	516,839	516,484	516,213	516,057	516,020	516,016	516,098	516,275	516,520	516,693	516,796	516,826	516,798	516,798	516,731	516,634	516,604	516,553	516,459	516,396	516,320	513,700	513,200	513,778	513,884	514,876	516,275	517,675	519,049	521,204	521,952	521,998	522,098	522,405	522,616	522,820						
Km	0+435	0+430	0+425	0+420	0+415	0+410	0+405	0+400	0+395	0+390	0+385	0+380	0+375	0+370	0+365	0+360	0+355	0+350	0+345	0+340	0+335	0+330	0+325	0+320	0+315	0+310	0+305	0+300	0+295	0+290	0+285	0+280	0+275	0+270	0+265	0+260	0+255	0+250	0+245	0+240	0+235	0+230	0+225	0+220



Nr.	Art der Änderung	Datum	Name

Freistaat Bayern  
Staatliches Bauamt Passau  
Am Schanz 2, Tel. 0951/5017-61, E-Mail: poststelle@stbapa.bayern.de

Unterlage: 8.4  
Blatt Nr.:  
Datum:  
Zeichen:

Planfeststellung

**B 11, Deggendorf - Bayer. Eisenstein  
Ortsumgebung Ruhmannsfelden**

Bau-km 0+000 - Bau-km 3+340  
B11\_1320\_1,161 - B11\_1360\_1,019

**Höhenplan**  
B11 alt - KV - Provisorium  
Maßstab 1: 1000 / 100

Aufgestellt: 10.04.2017  
Deggendorf, den  
Staatliches Bauamt

R. Wufka, Ltd. Baudirektor

Projekt: B11RU V12  
Datum:  
Geobasisdaten: © Bayerische Vermessungsverwaltung (Darstellung der Flurkarte als Eigentumsnachweis nicht geeignet)